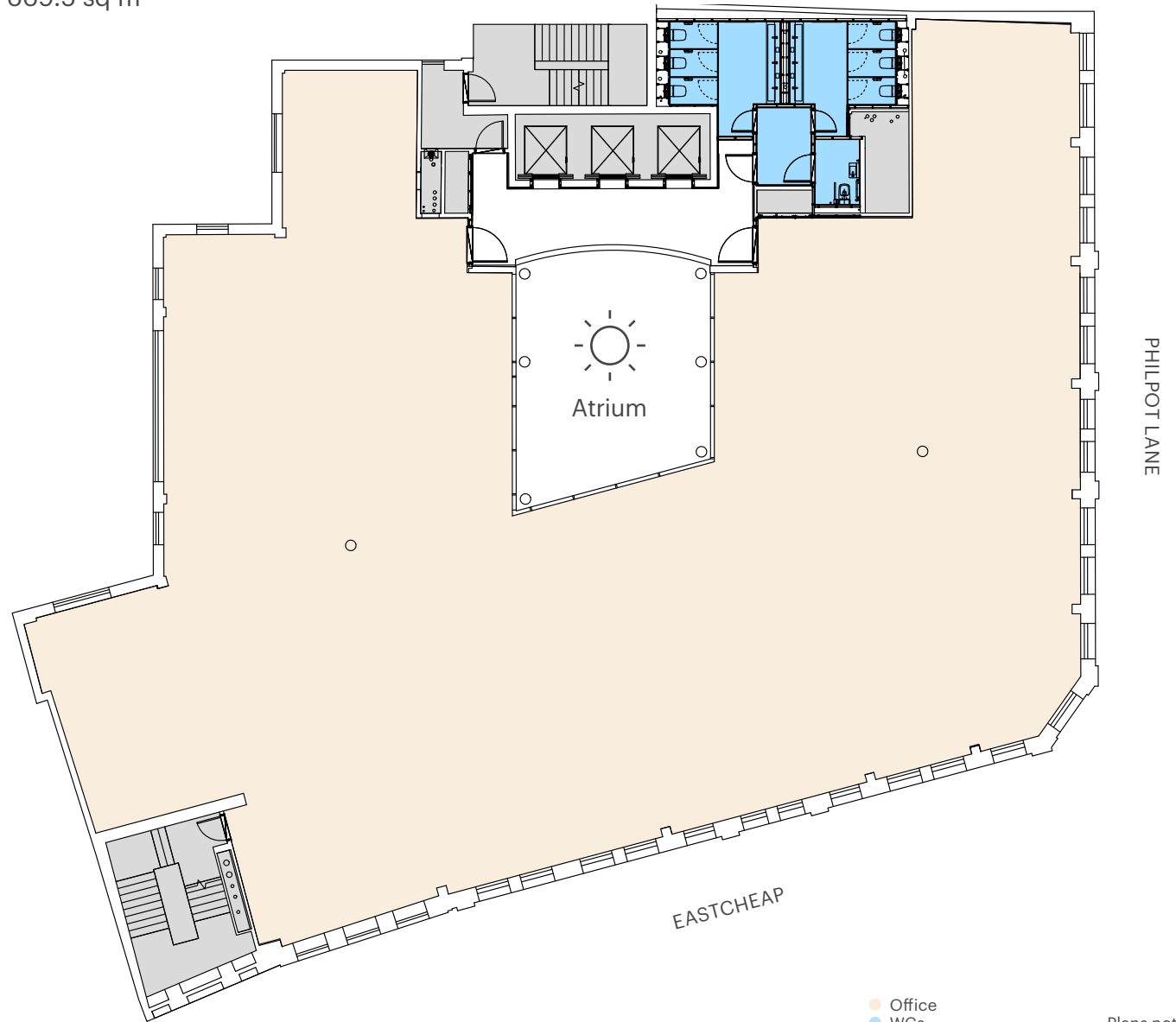


# Eastcheap Court

11 Philpot Lane  
London EC3

## Typical Upper Floor

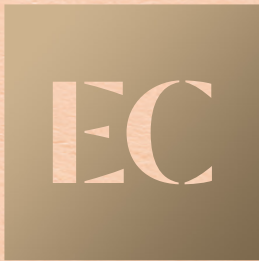
7,206 sq ft / 669.5 sq m



- Office
- WCs
- Core



Plans not to scale.  
For indicative purposes only



# Eastcheap Court

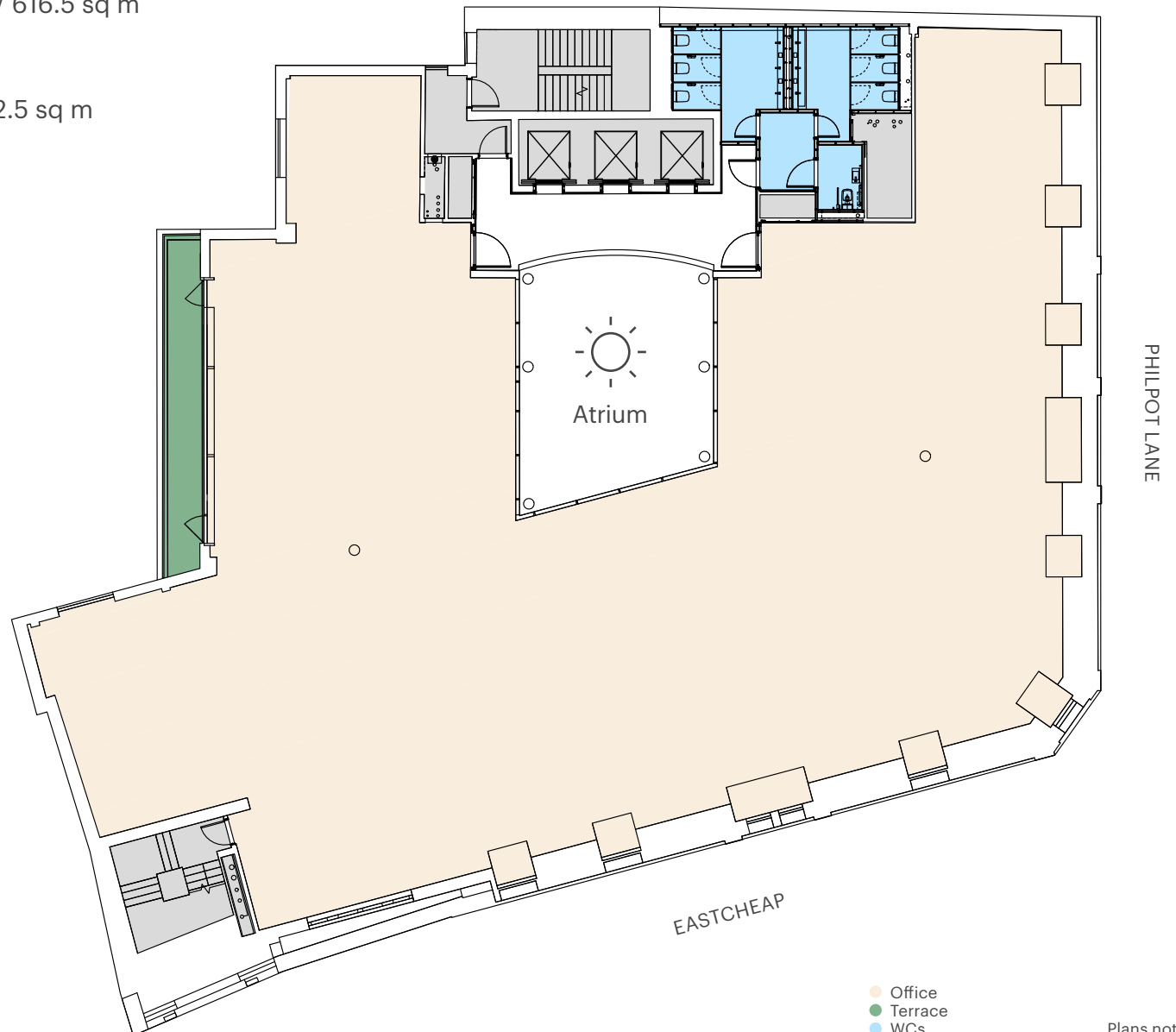
11 Philpot Lane  
London EC3

## Fourth Floor

6,636 sq ft / 616.5 sq m

## Terrace

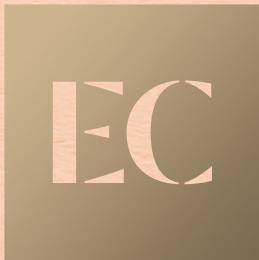
135 sq ft / 12.5 sq m



- Office
- Terrace
- WCs
- Core



Plans not to scale.  
For indicative purposes only



# Eastcheap Court

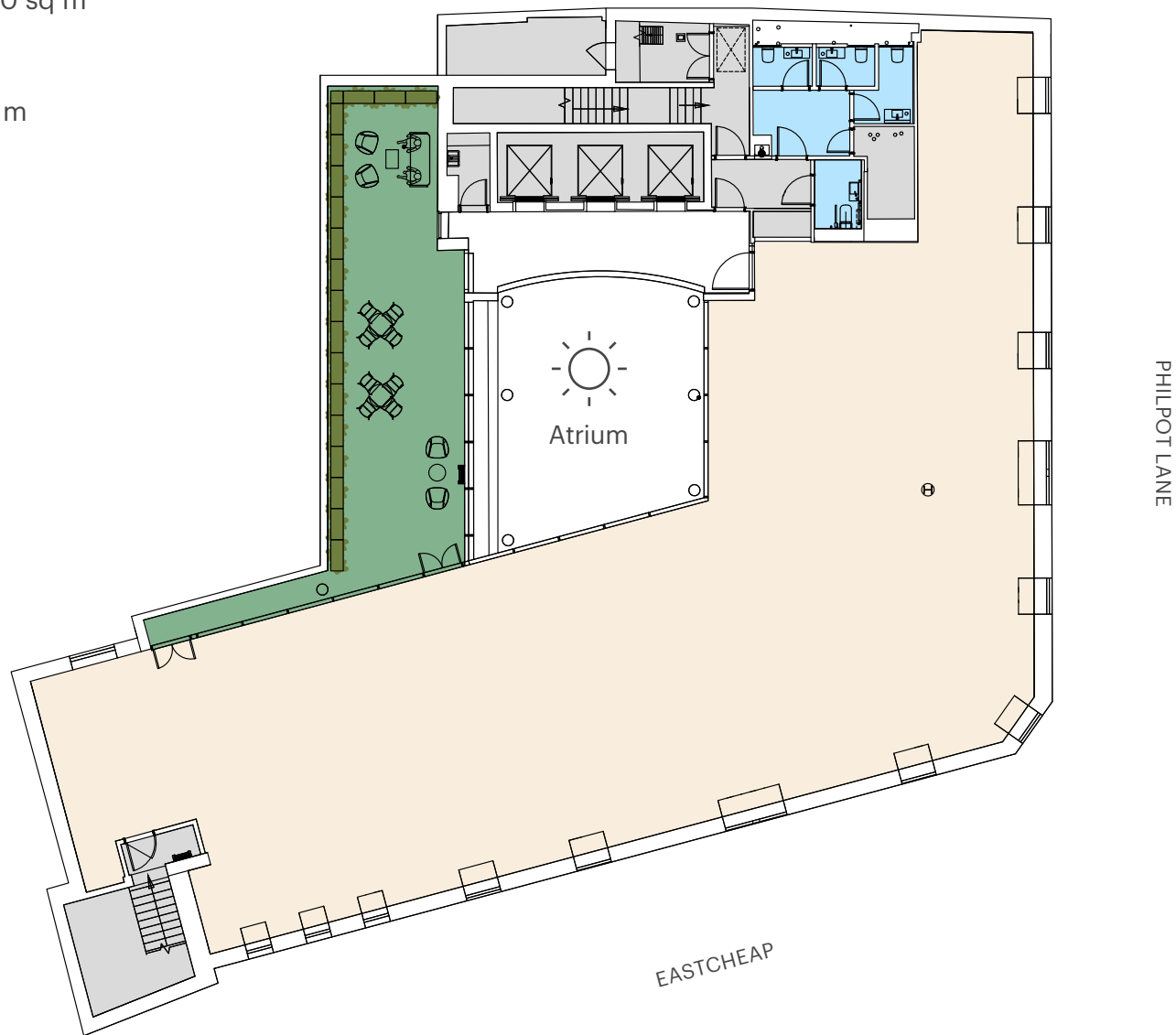
11 Philpot Lane  
London EC3

## Fifth Floor

4,187 sq ft / 389.0 sq m

## Terrace

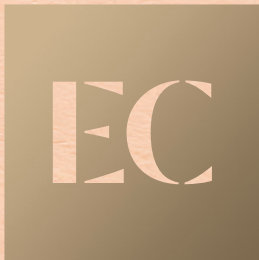
753 sq ft / 70 sq m



- Office
- Terrace
- WCs
- Core



Plans not to scale.  
For indicative purposes only



# Eastcheap Court

11 Philpot Lane  
London EC3

## Open Plan Layout

7,206 sq ft / 669.5 sq m

Open plan workstations	38
Hot desk workstations	16
1 Person Offices	02
5 Person meeting rooms	02
8 Person meeting rooms	03
Kitchen	01
<b>Total occupancy</b>	<b>56</b>



- Office
- WCs
- Core



Plans not to scale.  
For indicative purposes only

EC

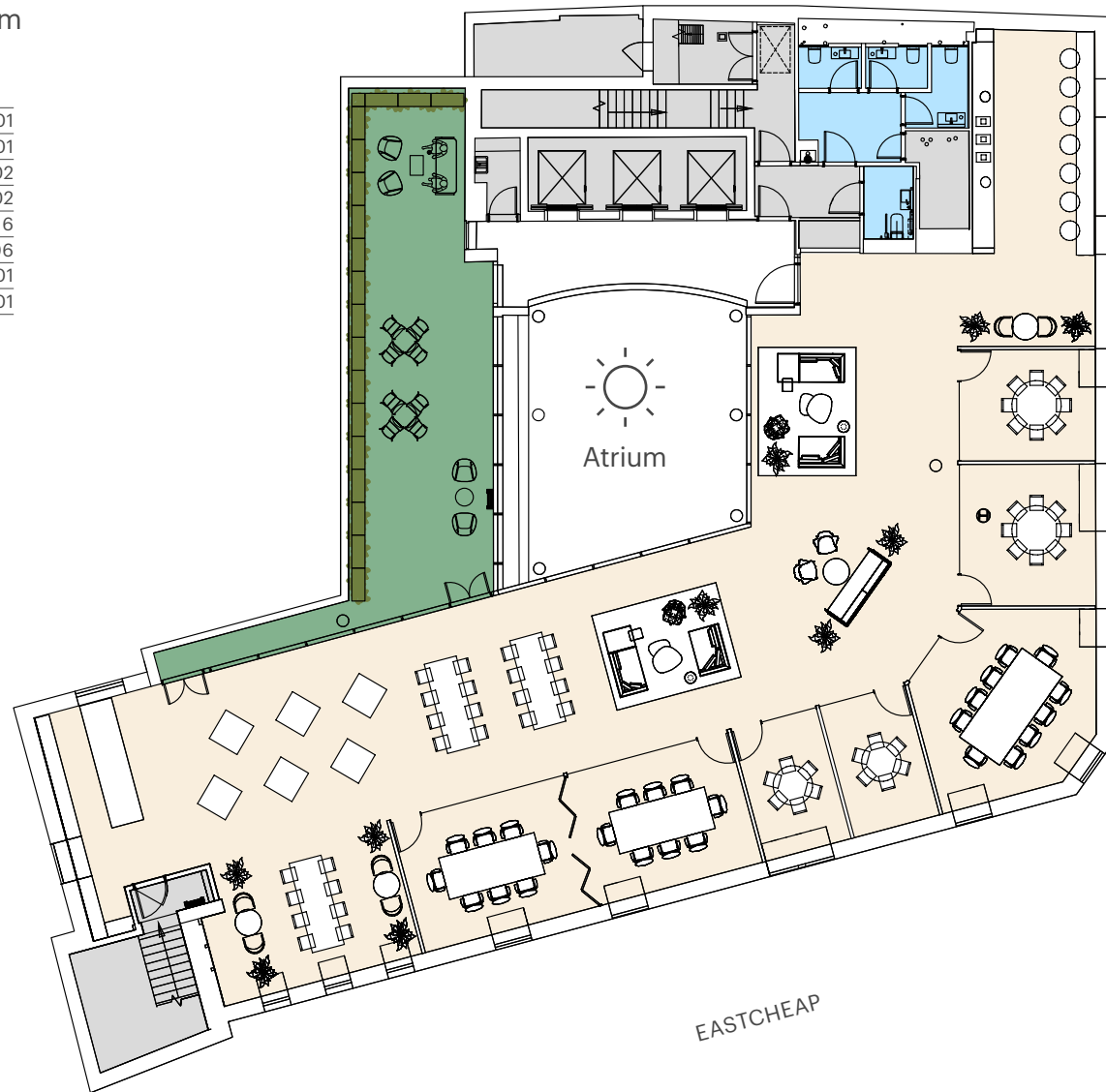
# Eastcheap Court

11 Philpot Lane  
London EC3

## 5th Floor Meeting Suite

4,187 sq ft / 389.0 sq m

16 or 2x8 Person meeting room	01
10 Person meeting room	01
8 Person meeting room	02
6 Person meeting room	02
Hot desk workstations	16
Informal meeting areas	06
Event space	01
Kitchen	01



PHILPOT LANE

EASTCHEAP

- Office
- Terrace
- WCs
- Core



Plans not to scale.  
For indicative purposes only